

SAFEMASTER STS
Safety switch-
and key interlock system
standard actuator T

Translation
of the original instructions



E. DOLD & SÖHNE KG
 P.O. Box 1251 • D-78114 Furtwangen • Germany
 Tel: +49 7723 6540 • Fax +49 7723 654356
 dold-relays@dold.com • www.dold.com

0278789

Content

Symbol and Notes Statement.....	6
General Notes	6
Notes	6
Product Description	7
Dimensional Drawings [mm].....	7
Approvals and Markings	7
Notes	7
Variants and Accessories	7
Ordering Designation.....	7

Symbol and Notes Statement



DANGER:

Indicates that death or severe personal injury will result if proper precautions are not taken.



WARNING:

Indicates that death or severe personal injury can result if proper precautions are not taken.



CAUTION:

Indicates that a minor personal injury can result if proper precautions are not taken.



INFO:

Referred information to help you make best use of the product.



ATTENTION:

Warns against actions that can cause damage or malfunction of the device, the device environment or the hardware / software result.

General Notes

The product hereby described was developed to perform safety functions as a part of a whole installation or machine. A complete safety system normally includes sensors (SAFEMASTER STS System), evaluation units, signals and logical modules for safe disconnections. The manufacturer of the installation or machine is responsible for ensuring proper functioning of the whole system. DOLD cannot guarantee all the specifications of an installation or machine that was not designed by DOLD. The total concept of the control system into which the device is integrated must be validated by the user. DOLD also takes over no liability for recommendations which are given or implied in the following description. The following description implies no modification of the general DOLD terms of delivery, warranty or liability claims.

Notes



Risk!

Danger to life or risk of serious injuries.

- Hazards must be ruled out before a key can be entered and the movable part of the guard can then be opened!



INFO

- For information regarding use in the system and validation according to EN ISO 13849-2, see SAFEMASTER STS application guide.
- Take advantage of the advice of the **E. DOLD & SÖHNE KG** specialists regarding the choice of units and combination of a system.



ATTENTION !

- To avoid wrong usage (e.g. by overload, mounting position or usage in acid, alkaline or other hostile ambient conditions) the limitations of the product have to be observed. Please check in advance if your application requires the usage of the more robust stainless steel model of SAFEMASTER STS. The requirements of the mounting and operating instruction must be fulfilled.



Before installing, operating or maintaining this device, these instructions must be carefully read and understood.



The installation must only be done by a qualified electrician!



The installation must only be done by a qualified mechanic!



Do not dispose of household garbage!
The device must be disposed of in compliance with nationally applicable rules and requirements.



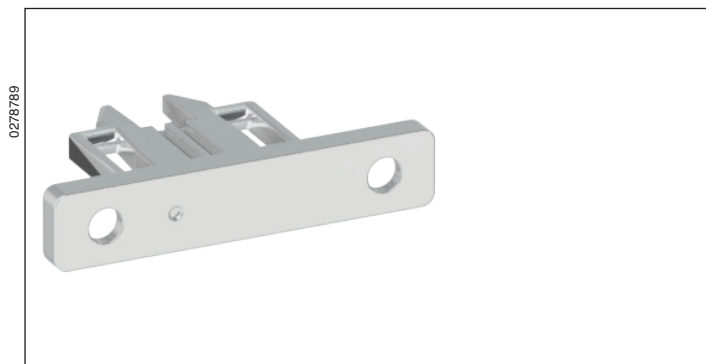
Storage for future reference.

To help you understand and find specific text passages and notes in the operating instructions, we have important information and information marked with symbols.

SAFEMASTER STS

Safety switch- and key interlock system

Standard actuator T



Presentation: Coded

STS-System Benefits

- EU-Test certificate according to the directive 2006/42/EG, annex IX
- For safety applications up to PLe/Cat. 4 according to DIN EN/ISO 13849-1
- Modular and expandable system
- Rugged stainless steel design
- Wireless mechanical safeguarding
- Combines the benefits of safety switch, locking module and key transfer in a single system
- Easy installation through comprehensive accessories
- Protection against lock-in
- Coding level low, medium, high according to DIN EN ISO 14119:2014-03

Features

- Rigid actuator
- Can be coded
- Economically priced

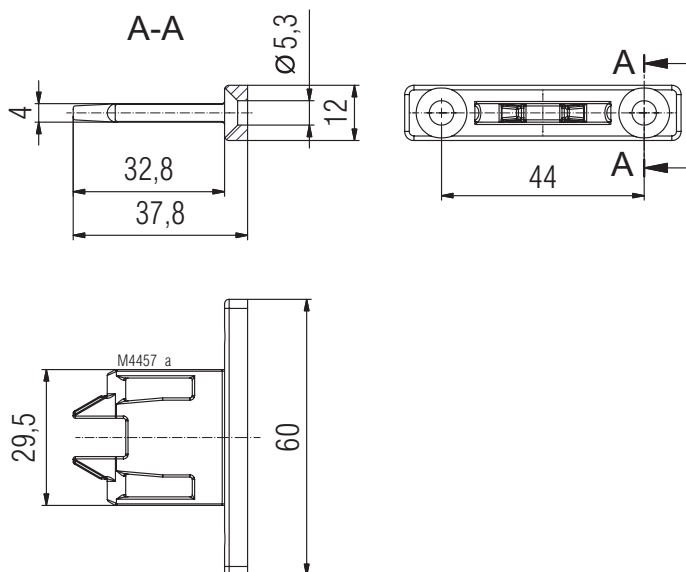
Product Description

The standard actuator T is used in connection with the SAFEMASTER STS units which are equipped with integrated actuator modules A, B, D, E or K. Generally, it is fitted to the movable part of a separating guard and is used to switch the associated STS unit. This simple actuator is ideal for standard applications with normal strain and for constructive devices such as sliding bolts.

Approvals and Markings



Dimensional Drawings [mm]



Notes

The standard actuator T is not suitable for applications in which an overload of the associated STS unit may occur. Such an example is a manually operated sliding door, the protection of which is achieved by an STS unit with a key module above the actuator module (for instance, SXB01M). In trying to close the door forcefully without first inserting the required key into the key module, the actuator module will remain blocked. The effect of the force of the slammed door may damage the standard actuator or the actuator module.

Recommendation:

We therefore recommend the actuator C or actuator CS for such applications. Additional information is available in the data sheets actuator C or actuator CS in the customer information on the issue of overloading.

Variants and Accessories

The standard actuator T is also available as coded version. The product designation of the actuator T then becomes actuator TK.

Coding level medium according to DIN EN ISO 14119:2014-03

Ordering Designation

Standard actuator T	
Article number:	0064823
Standard actuator TK	
Article number:	0066199

