

SAFEMASTER STS Safety switch- and key interlock system actuator J

Translation
of the original instructions



E. DOLD & SÖHNE KG
P.O. Box 1251 • D-78114 Furtwangen • Germany
Tel: +49 7723 6540 • Fax +49 7723 654356
dold-relays@dold.com • www.dold.com

0278772

Content

Symbol and Notes Statement.....	6
General Notes	6
Notes	6
Product Description	7
Dimensional Drawings [mm].....	7
Approvals and Markings	7
Design and Function.....	7
Notes	7
Technical Data	7
Presentation of Degrees of Flexibility	8
Variants and Accessories	8
Ordering Designation.....	8

Symbol and Notes Statement



DANGER:
Indicates that death or severe personal injury will result if proper precautions are not taken.



WARNING:
Indicates that death or severe personal injury can result if proper precautions are not taken.



CAUTION:
Indicates that a minor personal injury can result if proper precautions are not taken.



INFO:
Referred information to help you make best use of the product.



ATTENTION:
Warns against actions that can cause damage or malfunction of the device, the device environment or the hardware / software result.

General Notes

The product hereby described was developed to perform safety functions as a part of a whole installation or machine. A complete safety system normally includes sensors (SAFEMASTER STS System), evaluation units, signals and logical modules for safe disconnections. The manufacturer of the installation or machine is responsible for ensuring proper functioning of the whole system. DOLD cannot guarantee all the specifications of an installation or machine that was not designed by DOLD. The total concept of the control system into which the device is integrated must be validated by the user. DOLD also takes over no liability for recommendations which are given or implied in the following description. The following description implies no modification of the general DOLD terms of delivery, warranty or liability claims.

Notes



Risk!
Danger to life or risk of serious injuries.

- Hazards must be ruled out before a key can be entered and the movable part of the guard can then be opened!



INFO

- For information regarding use in the system and validation according to EN ISO 13849-2, see SAFEMASTER STS application guide.
- Take advantage of the advice of the **E. DOLD & SÖHNE KG** specialists regarding the choice of units and combination of a system.



ATTENTION !

- To avoid wrong usage (e.g. by overload, mounting position or usage in acid, alkaline or other hostile ambient conditions) the limitations of the product have to be observed. Please check in advance if your application requires the usage of the more robust stainless steel model of SAFEMASTER STS. The requirements of the mounting and operating instruction must be fulfilled.



Before installing, operating or maintaining this device, these instructions must be carefully read and understood.



The installation must only be done by a qualified electrician!



The installation must only be done by a qualified mechanic!



Do not dispose of household garbage!
The device must be disposed of in compliance with nationally applicable rules and requirements.



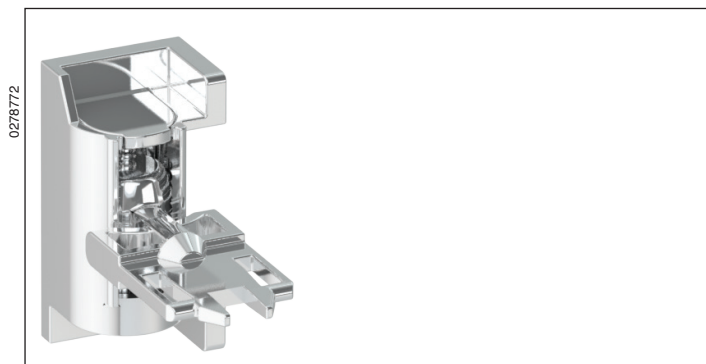
Storage for future reference.

To help you understand and find specific text passages and notes in the operating instructions, we have important information and information marked with symbols.

SAFEMASTER STS

Safety switch- and key interlock system

Actuator J



Presentation: Coding level „Low“; without mounting bracket

STS-System Benefits

- EU-Test certificate according to the directive 2006/42/EG, annex IX
- For safety applications up to PLe/Cat. 4 according to DIN EN/ISO 13849-1
- Modular and expandable system
- Rugged stainless steel design
- Wireless mechanical safeguarding
- Combines the benefits of safety switch, locking module and key transfer in a single system
- Easy installation through comprehensive accessories
- Protection against lock-in
- Coding level low, medium, high according to DIN EN ISO 14119:2014-03

Features

- Actuator with 4 degrees of flexibility
- Mounting bracket included
- Retains its last position
- Can be coded
- Self-adjusting
- Simple manual setting
- Manual adjustment of vertical offset during operation up to 16 mm

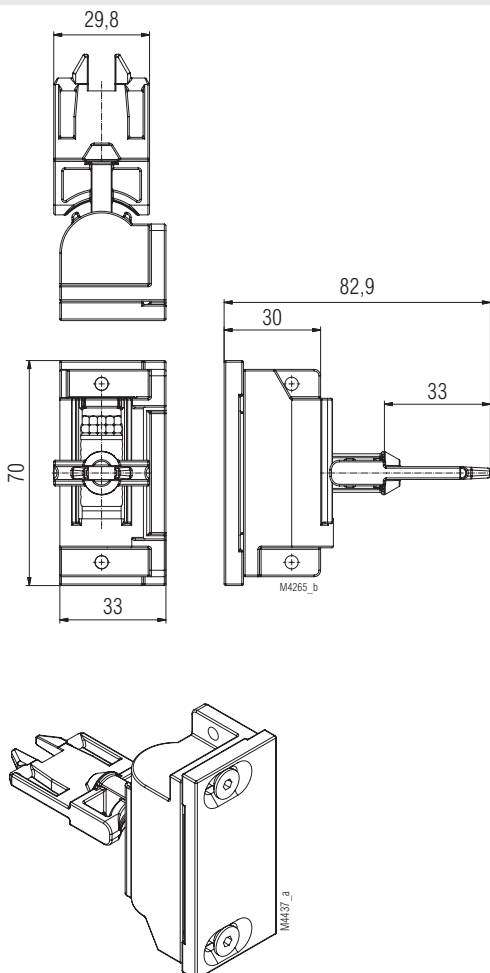
Product Description

The self-adjusting actuator J is used in connection with the SAFEMASTER STS units which are equipped with integrated actuator modules A, B, D, E or K. Generally, it is fitted to the movable part of a separating guard and is used to switch the associated STS unit.

Approvals and Markings



Dimensional Drawings [mm]



Design and Function

The self-adjusting actuator J is suitable for difficult applications where actuator C or a sliding bolt cannot be used.

In addition to the self-adjustment the actuator J has the added advantage, compared to the actuator C, that it retains its last position when removed from the actuator module. By contrast, the actuator C springs back to its set position.

4 mounting holes are provided for fastening the actuator J. An installation bracket is included in the scope of delivery especially for applications with sliding doors.

Notes

Attention!



Actuator J may not be used if there is a risk of overloading the associated STS unit through possible use of force!

Such an example is a manually operated sliding door, the protection of which is achieved by an STS unit with a key module above the actuator module, for instance, SXB01M. If the door is closed here by force while the key is still removed, the actuator module B remains blocked. It may therefore sustain mechanical damage when slamming the door shut with force.

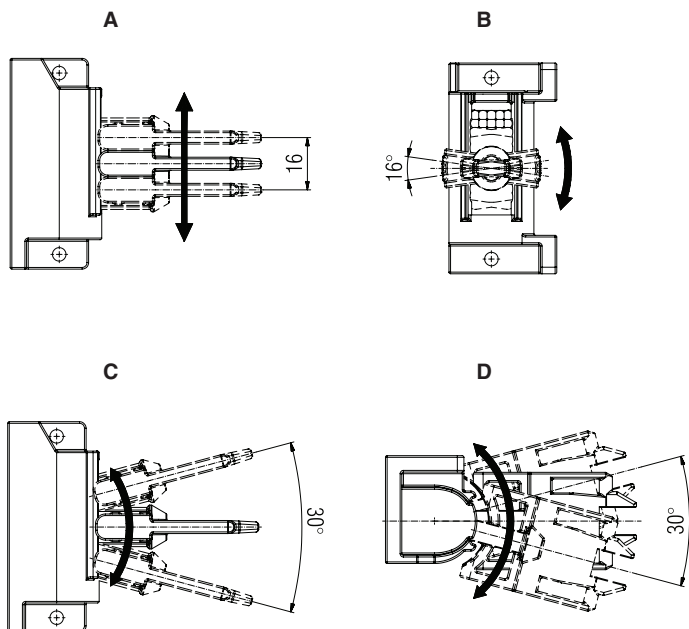
Technical Data

Material

Actuator:

Stainless steel V4A / AISI 316

Presentation of Degrees of Flexibility



Presentation without mounting bracket

Optimal flexibility

Actuator STS-J has 4 degrees of flexibility. From its centre position it can be

- moved vertically by ± 8 mm (**A**)
- rotated around its longitudinal axis by up to $\pm 8^\circ$ (**B**)
- swivelled vertically by $\pm 15^\circ$ (**C**)
- swivelled horizontally by $\pm 15^\circ$ (**D**)

Variants and Accessories

The self-adjusting actuator STS-J is also available as coded version. The product designation of the J-actuator then becomes JK-actuator.

Coding level low, medium, high according to DIN EN ISO 14119:2014-03



INFO:

Can only be ordered in pairs with actuator module D or E.

Refer to the customer information for additional details on selecting the actuator.

Ordering Designation

Actuator STS-J

Article number: 0062732